

NX1

Firmware Upgrade guide

(i-Launcher)



Samsung Electronics.

NX1 Firmware upgrade guide

- Easy Firmware upgrade: Please use i-Launcher program.
- You can install i-Launcher using NX1 camera.

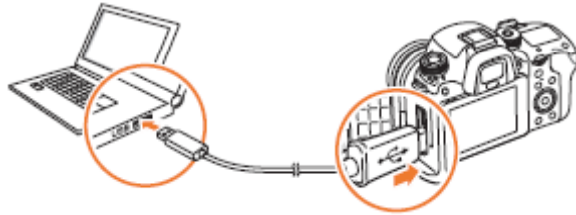
(refer to next page)

※ Information

- 1) Use the full charged battery
- 2) Suggested memory card format before upgrade start
- 3) Memory card need 1GB free space
- 4) During the updating process: Do not cut off the power / Do not remove the battery
→ It causes the cannot power-on or the severe damage
- 5) Finish upgrade: all menu will be reset

Installing i-Launcher or i-Launcher Web

1. Turn off the camera.
2. Connect the camera to your computer with the USB cable.



- Before installing the program, ensure that the PC is connected to a network.
- You must plug the small end of the USB cable into your camera. If the cable is reversed, it may damage your files. The manufacturer is not responsible for any loss of data.

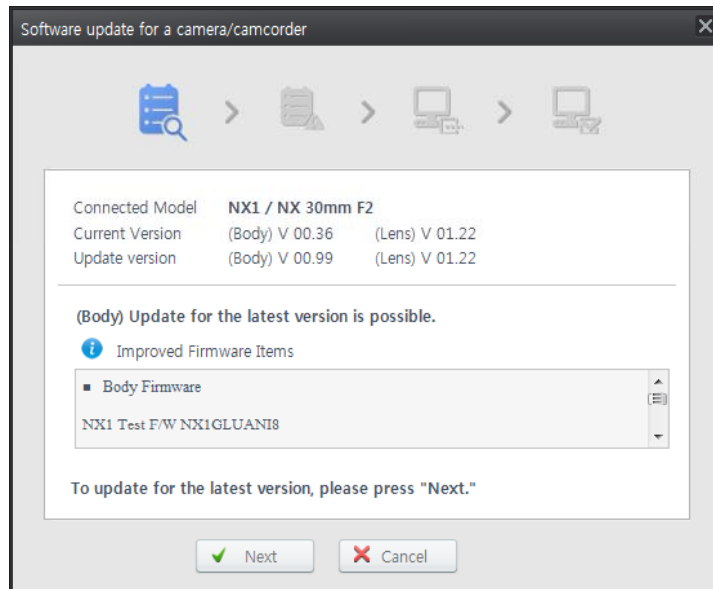
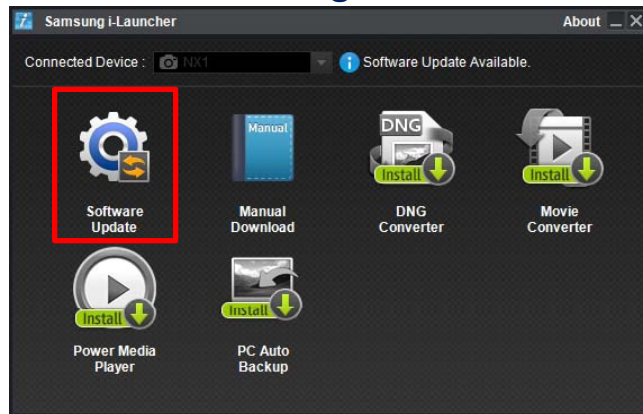
3. Turn on the camera.
4. When the pop-up window prompts you to install i-Launcher, select **Yes**.
 - If a pop-up window prompting you to run iLinker.exe appears, run it first.
 - When you connect the camera to a computer with i-Launcher installed, the program will launch automatically.
5. Follow the on-screen instructions to install i-Launcher or i-Launcher Web.
 - An i-Launcher shortcut will appear on the computer.

[Opening i-Launcher]

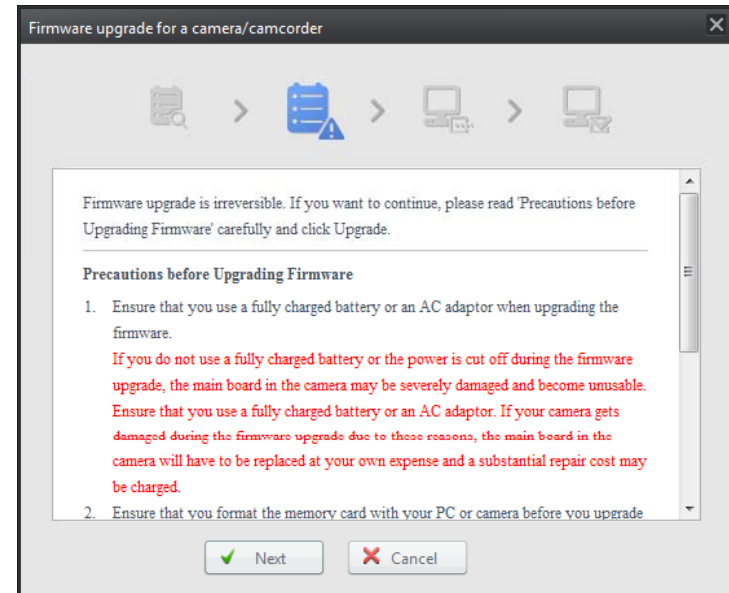
- Windows OS : Start → All Programs → Samsung → i-Launcher
- Mac OS : Applications → Samsung → i-Launcher

Firmware upgrade method

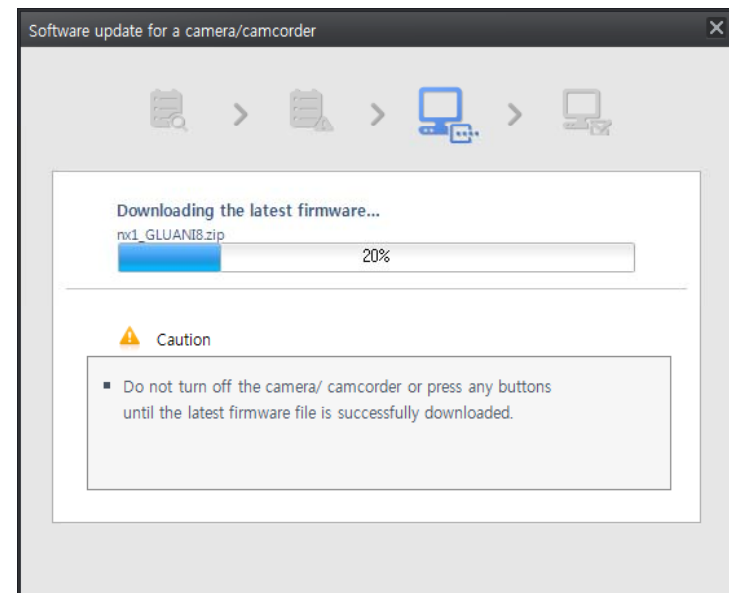
1. You can connect the camera to your computer
2. Opening “Samsung i-Launcher”
 - select “Firmware Upgrade” menu
 - * Automatically “Upgrade window” open if new firmware registered.



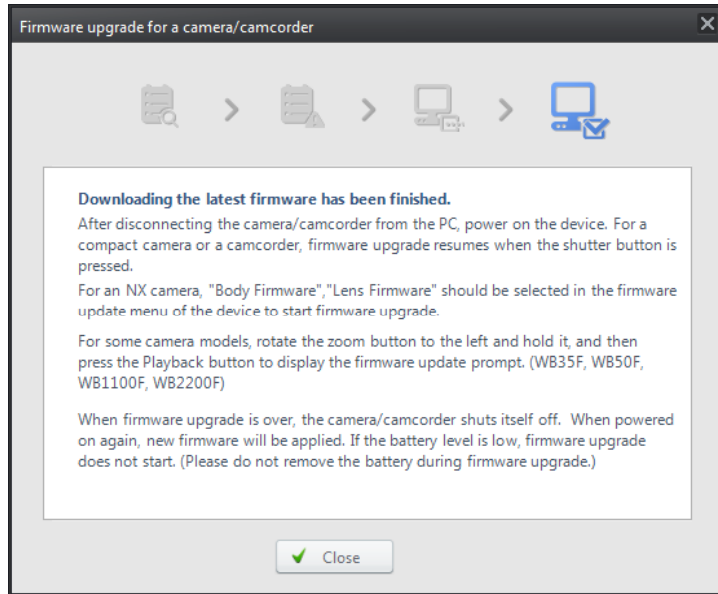
3. You can check precautions



4. Firmware download start



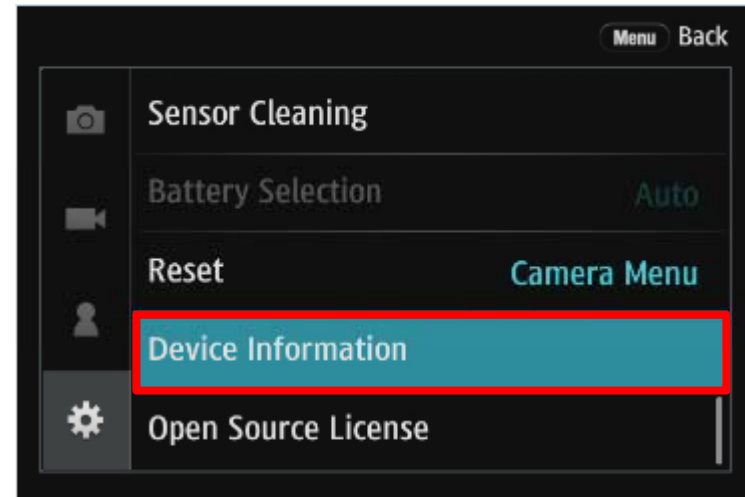
5. Once the transfer is complete, click the Close button



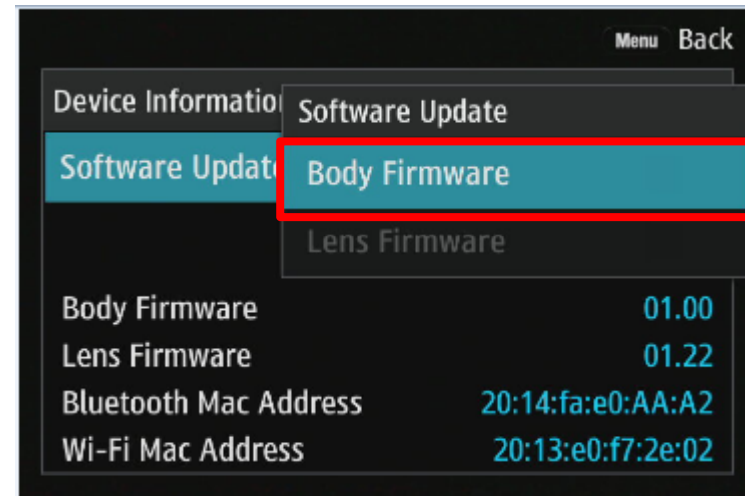
6. Terminate the USB cable connection

7. Turn the camera on

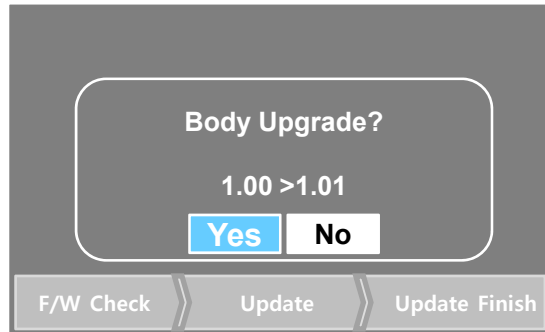
8. Select the MENU → Setting → Device Information



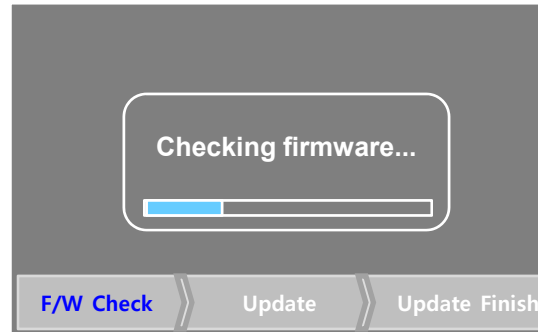
9. Select Software Update → Body Firmware Update



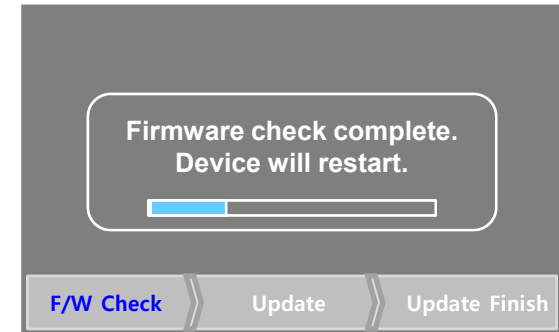
10. Update will start follow below sequence



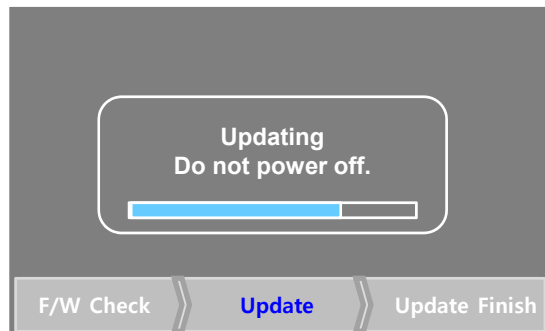
- ① Firmware version checking
Press "Yes" → Upgrade start



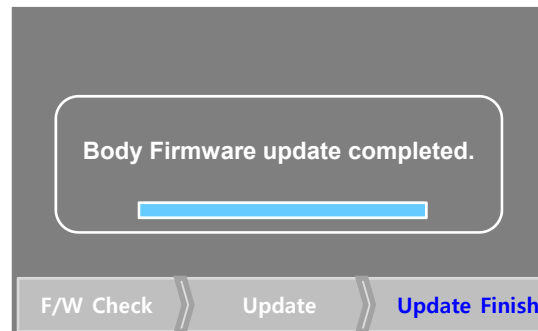
- ② checking firmware file



- ③ Device will restart after checking firmware



- ④ You can see the updating status
→ After finish updating
→ Camera power-off & reboot
※ Do not cut off the power.
Do not remove the battery.



- ⑤ Finish upgrade
→ You can see "Firmware update completed" message
※ If your camera stop or power-off during upgrading
→ Please retry upgrade

